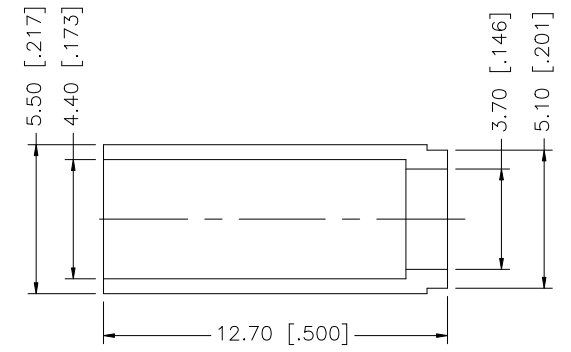
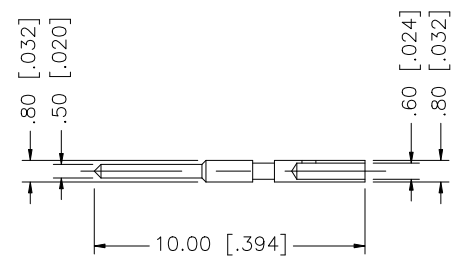
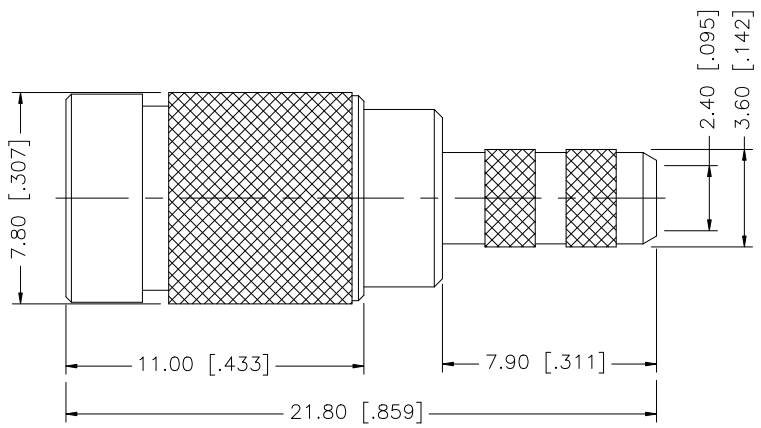
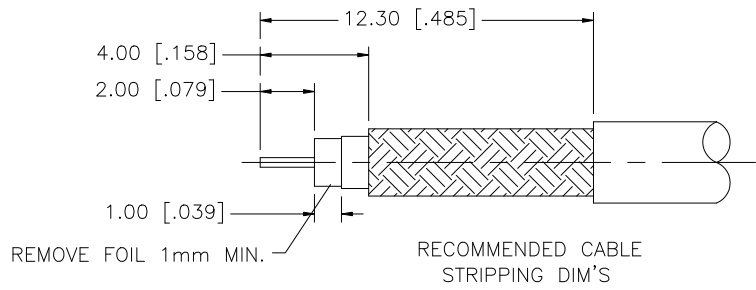


REV.	DATE	DESCRIPTION
NC	07/08/04	INITIAL RELEASE
A	10/03/07	REVISE BODY DIAMETER AND LENGTH
B	11/18/07	CHANGE CABLE DESCRIPTION TO "735A CABLE"



- CRIMP NOTES:
1. CRIMPED FERRULE HEX CRIMP SIZE .178"
  2. CONTACT PIN TO SOLDER.

DESCRIPTION	MATERIAL	FINISH	QTY	UNLESS OTHERWISE SPECIFIED DIMENSIONS ARE IN MILLIMETERS. DIMENSIONS IN [ ] ARE IN INCHES AND FOR CUSTOMER REFERENCE ONLY.	APPROVALS	DATE	Amphenol Connex					
				UNLESS OTHERWISE SPECIFIED TOLERANCES FOR MILLIMETERS ARE: 0.5 - 8mm ± 0.20mm 8 - 30mm ± 0.40mm 30 - 120mm ± 0.50mm	DRAWN G.R.S.	11/18/07	PART DESCRIPTION <b>1.0/2.3 CRIMP PLUG (FOR 735A CABLE - 75ohm)</b>					
8				UNLESS OTHERWISE SPECIFIED TOLERANCES FOR INCHES ARE: .020 - .315 = ± 0.007" .315 - 1.180 = ± 0.015" 1.180 - 4.724 = ± 0.020"	CHECKED						PART NO. <b>282118-75</b>	
7					ISSUED		DWG. NO. 282118-75.DWG					
6					SHEET 1 OF 1						REV. B SIZE A SCALE NA	
5					CAD FILE C:/282/282118-75.DWG							
4	FERRULE	COPPER	NICKEL	1								
3	CONTACT PIN	BRASS	GOLD	1								
2	INSULATOR	TEFLON	NATURAL	1								
1	BODY	BRASS	NICKEL	1								
				DO NOT SCALE DRAWING								